

THALES



NGIN

Voice Over IP for naval applications



Secure voice services for internal and external communications

- Intercom, telephone and broadcast
- EMCON application
- Interfaces with radio distribution system

State of the art design

- Full IP technology with optimum usage of COTS
- Security mechanisms
- Ready for network enabled capability

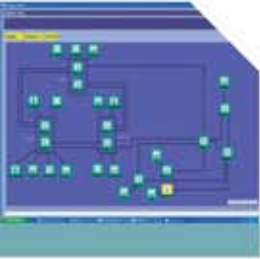
Flexible and scalable solution

- From submarines to frigate and aircraft carrier



NGIN

Voice Over IP for naval applications



Design and architecture

NGIN is based on full IP technology and uses COTS as well as MOTS, ready for Network Enabled Capability.

Equipments are connected to the IP backbone through IP switches.

Full end-to-end services implementing voice over IP terminals, radios and security gateways.



Availability

A distributed architecture with duplication of servers and redundancy of interfaces gives to NGIN a very high level of reliability and survivability.



Security mechanisms

- User Authentication (PIN number)
- Access and rights control for internal and external communications
- Firewalls, black/red separation, control datagrams towards external communications.



System Management

- Centralized configuration and supervision
- Remote Monitoring
- Services oriented : COMPLAN, SHIPPLAN

Voice over IP terminal (VoIP)

- Multichannels up to 12 simultaneous communications
- Large color touch screen
- Redundant IP connection

Gateway

Interface, audio and control line for radios, broadcast, wireless, telebrief, underwater communications.

Security gateway providing secure architecture in accordance with operational requirements.

Server

Ruggedized COTS, including software for naval applications:

- Gatekeeper: call number/IP address translation
- Access and rights control
- Conference management

Standards

- IP IETF relevant RFCs
- Ethernet IEEE 803.3
- Comms protocol ITU-T H.323 and IETF SIP
- Management Information Base (MIB) and Simple Network Management Protocol (SNMP)
- Real time transport protocol (RTP) and real time control protocol (RTCP)



Thales Communications, Inc.

22605 Gateway Center Drive, Clarksburg, MD 20871
Toll-Free: 1.800.258.4420 | Phone: 240.864.7000 | Fax: 240.864.7920
E-mail: naval.maritime@thalescomminc.com
Website: www.thalescomminc.com

2915.03211:V1

